



# GALAXY ENCLAVE THE URBAN VILLAGE

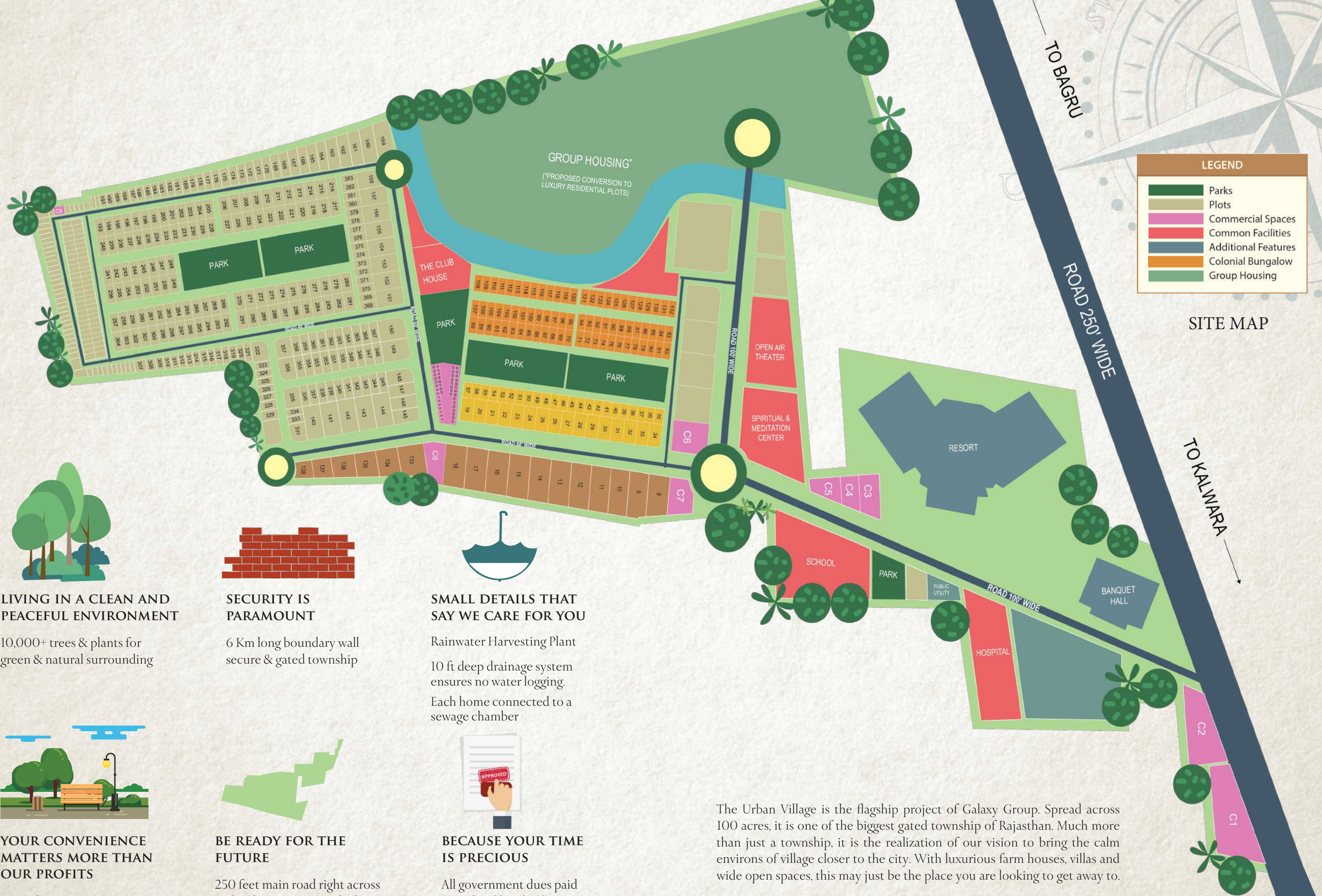


*Modern Day Luxuries In Harmony With Nature*

RERA Registration No: RAJ/P/2017/448 | RAJ/P/2020/1364 | RAJ/P/2021/1450 | RAJ/P/2021/1698 | RAJ/A/2020/1685

[www.rera.rajasthan.gov.in](http://www.rera.rajasthan.gov.in)





## LIVING IN A CLEAN AND PEACEFUL ENVIRONMENT

10,000+ trees & plants for green & natural surrounding

## SECURITY IS PARAMOUNT

6 Km long boundary wall secure & gated township

## SMALL DETAILS THAT SAY WE CARE FOR YOU

Rainwater Harvesting Plant  
10 ft deep drainage system ensures no water logging.  
Each home connected to a sewage chamber

## YOUR CONVENIENCE MATTERS MORE THAN OUR PROFITS

More than 50% open space for bigger parks & wider roads

## BE READY FOR THE FUTURE

250 feet main road right across Mahindra SEZ, next to the best schools of the city

## BECAUSE YOUR TIME IS PRECIOUS

All government dues paid so no legal hassles for you

The Urban Village is the flagship project of Galaxy Group. Spread across 100 acres, it is one of the biggest gated township of Rajasthan. Much more than just a township, it is the realization of our vision to bring the calm environs of village closer to the city. With luxurious farm houses, villas and wide open spaces, this may just be the place you are looking to get away to.

Modern day luxuries in harmony with nature.





\* As compared to Jaipur City Center

\*\* Based on average values as collected by NABL accredited and ISO certified Testing Laboratory

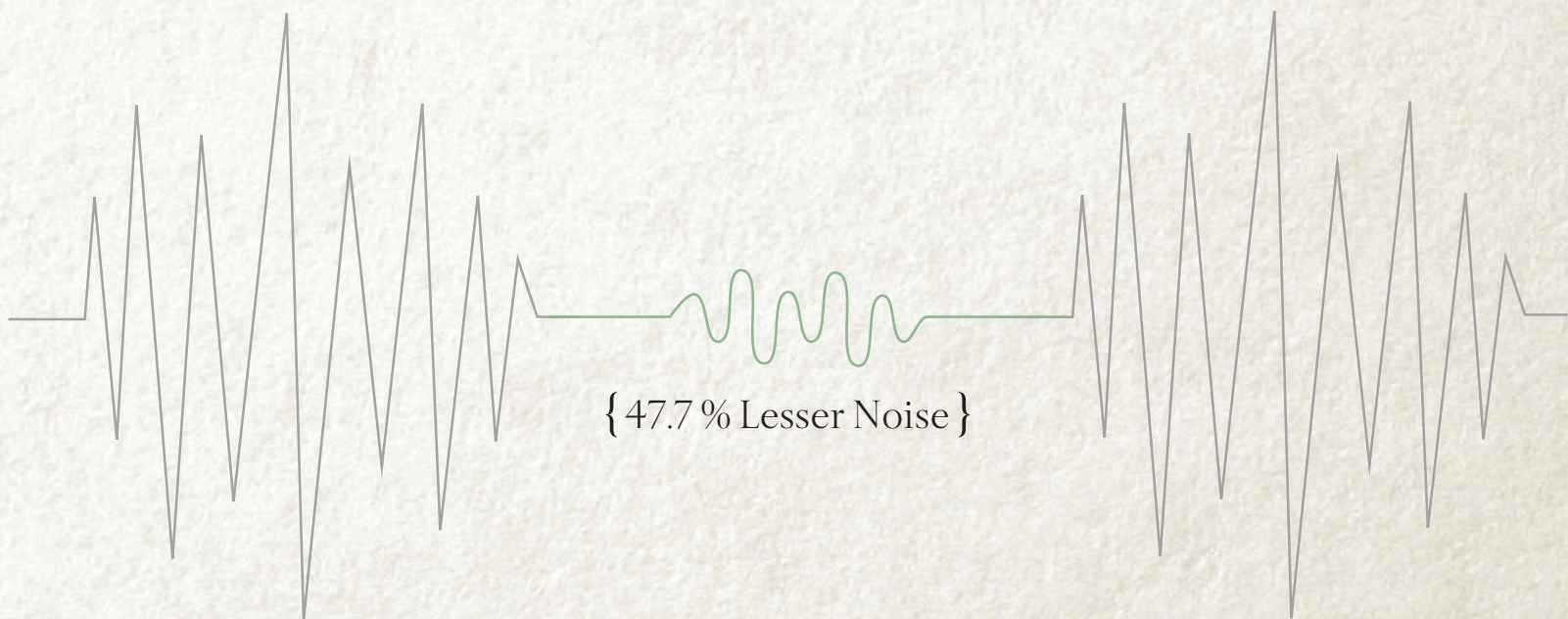
\*\*\* Test conducted on 26-10-2017



Resonates with our ethos.  
Symbolises enlightenment, strength, the universe and  
the infinite.



Eventually, everything connects.





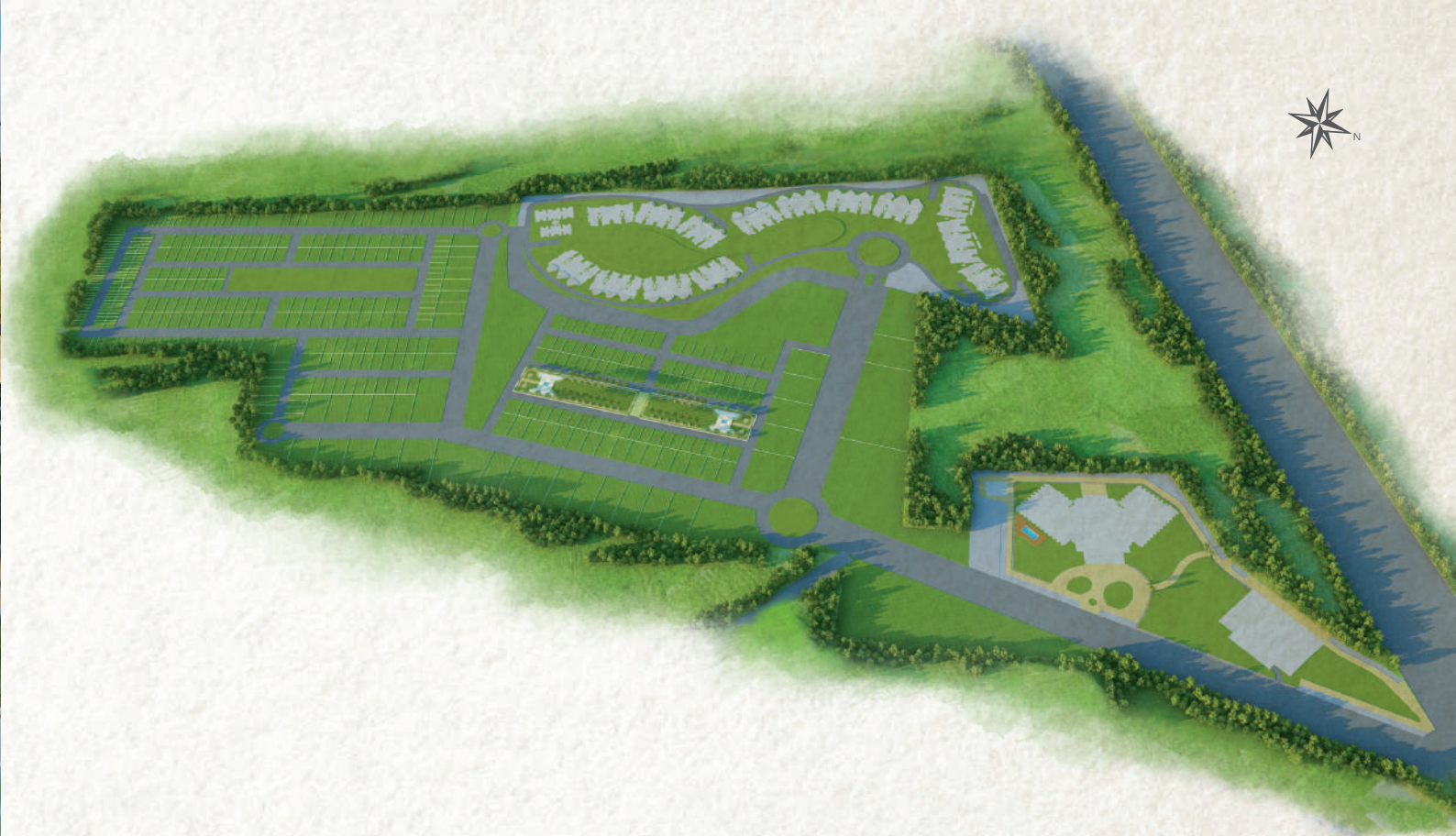


## THE URBAN CLUB

A perfect retreat for recreation, The Urban Club exudes elegance and warmth. Challenge your friends in the pool or in the virtual reality. Sharpen your delivery at the courts or just unwind in the library. At The Urban Club, you will be spoiled for choices -

- Swimming Pool
- Pool Table
- Virtual Reality
- Gaming Zone
- Card Room
- Reading Room
- Gymnasium
- Badminton Court
- Restaurant
- Rooms to stay
- Mini Theatre
- Basketball Court
- Mini Banquet
- ...and much more

\*Membership to The Urban Club is subject to conditions.



## RESIDENTIAL PLOTS

You can be a part of Urban Village too! With plots starting from 138 square yards. The Urban Village is thoughtfully planned to provide complete freedom of choice. With plots on offer ranging from 138 square yards to 1200 square yards, you have the option to pick your own piece of land and design the perfect home of your dreams.

## COMMERCIAL PLOTS

### PLOTS

- Limited inventory of commercial plots available

### SHOPS

- 10x10 feet shops available

## AMENITIES & FACILITIES

- 24x7 Water Facilities
- Proposed Hospital, School
- Yoga and Meditation Centre
- Commercial Plots & Retail Shops
- 24x7 Electricity
- Club House
- Wide Roads
- 55% Open Area
- CCTV Camera
- Highly Secured
- Sewage Treatment Plant
- Open Air Theatre





## BANQUET HALL

The perfect canvas for your events & celebrations, 36,000 sq feet of which 20,000 sq feet is pillarless.



## RESORT

When you need to break away from the city, we have 174 rooms of sheer luxury and all other amenities to indulge you.

Banquet Hall & Resort has separate entry from The Urban Village township.  
Urban Village residents will get priority benefits on usage.





## PRESTIGE VILLA

Sprawling lawns & open courtyards - where sunshine says good morning & sunset takes the working days' fatigue away from you. If you don't come home to this; have you really come home?

Prestige Villas; aesthetically designed for an independent lifestyle.

• Plot size: 373 sq. yard (42 feet X 80 feet)

• Built up: 4600 sq. feet

- Well-planned interiors with spacious bedrooms
- Designated & expansive areas for entertainment and dining
- All rooms ensuite with dressing
- Elevator for ease of access

- Centre courtyard, canopy balcony and open terrace
- Vastu friendly
- 1000 sq feet of lawn & courtyard





## COLONIAL BUNGALOW

Your home should be just like you- graceful and full of class.

Our Colonial Bungalows are a delight to look at and a perfect match for your classy lifestyle.

- 3 bedrooms, ample space for entertainment & dining along with two balconies
- 17.3 feet x 11 feet master bedroom
- All rooms with ensuite dressing
- Separate drawing, dining and kitchen area
- Vastu friendly
- All rooms with access to balcony
- Study/ office station for work-from-home in all villas

## COLONIAL BUNGALOW GRANDE

- Plot size: 171.1 sq. yard (28 feet X 55 feet)
- Built up area: 2550 sq. feet

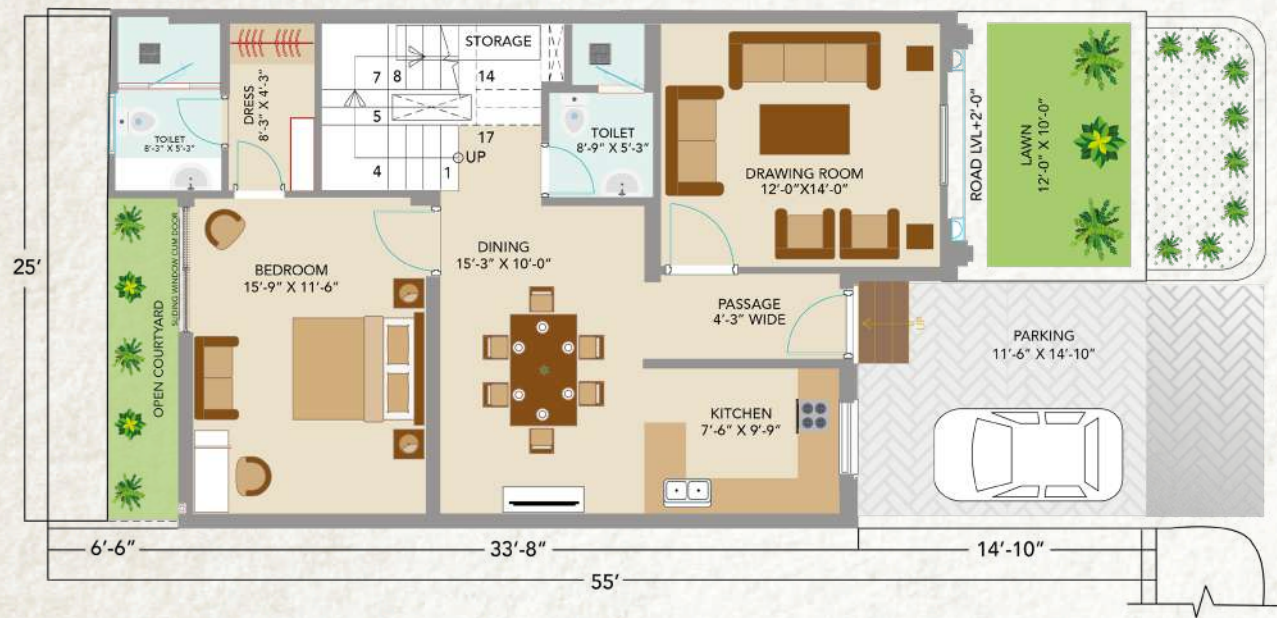
## COLONIAL BUNGALOW

- Plot size: 152.77 sq. yard (25 feet X 55 feet)
- Built up area: 2295 sq. feet



SPACIOUS VILLAS, A PERFECT MATCH FOR YOUR  
CLASSY LIFESTYLE

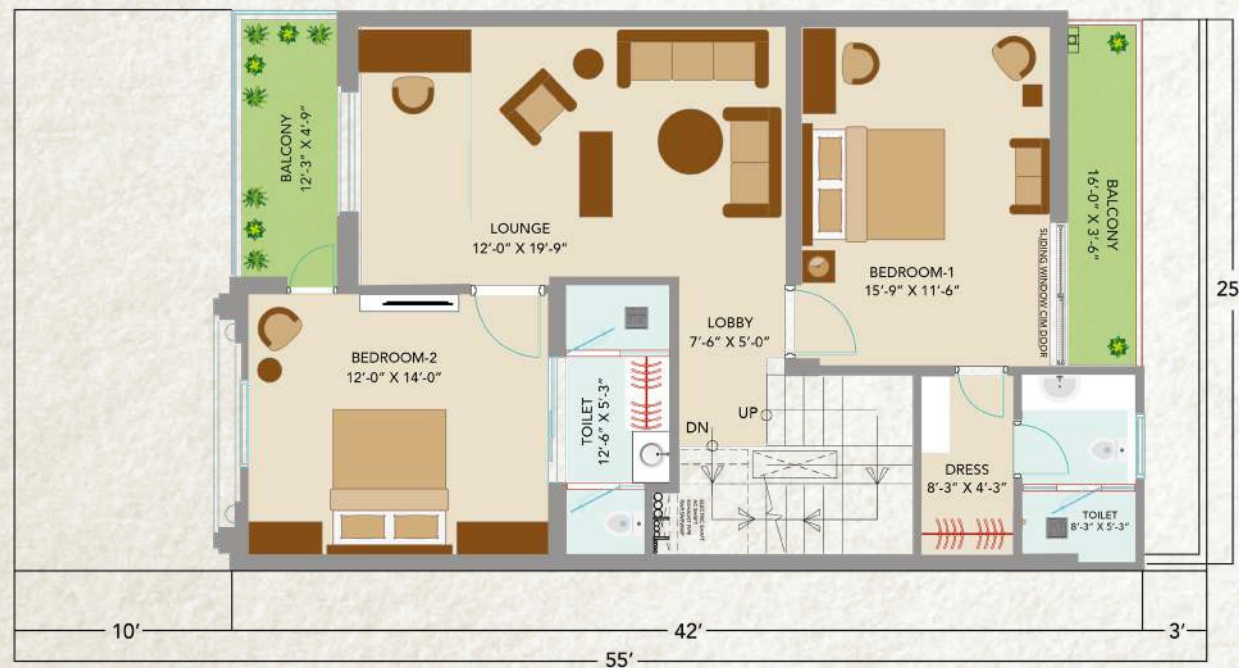




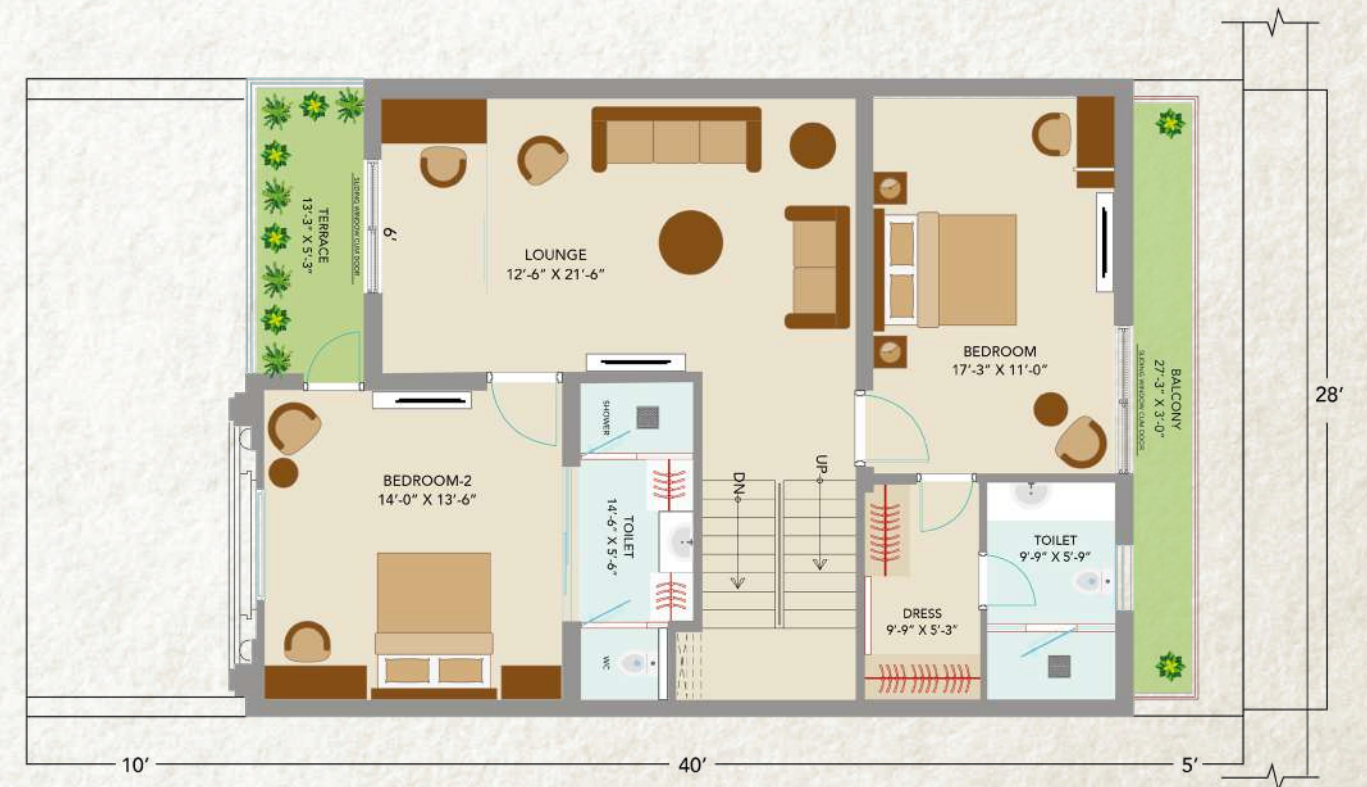
COLONIAL BUNGALOW:  
GROUND FLOOR  
25 x 55 sq. feet



COLONIAL BUNGALOW GRANDE:  
GROUND FLOOR  
28 x 55 sq. feet



COLONIAL BUNGALOW:  
FIRST FLOOR  
25 x 55 sq. feet



COLONIAL BUNGALOW GRANDE:  
FIRST FLOOR  
28 x 55 sq. feet



## COLONIAL BUNGALOW SPECIFICATIONS

### FLOOR FINISHES

- Drawing, Living and Bed rooms: Superior Finish Vitrified Tiles flooring & skirting (Brand- Qutone (size 8x4 feet & 6x4 feet) or equivalent
- Toilets, Kitchen, Utility, Balcony and Verandah: Anti-skid ceramic tiles and skirting.
- Car Parking 20 mm thick, full body vitrified tile

### WALL FINISHES

- P.O.P. wall finishing on all internal walls
- Internal walls: Plastic paint (Asian Paints, Nerolac or equivalent)
- Toilets: Upto 8 feet height, Ceramic wall tiles and rest Plaster with Plastic Paint
- External walls: Exterior textured emulsion paint as per elevation design

### KITCHEN

- Modular kitchen with premium granite counter top and 2'0" high glazed wall tiling above platform
- S.S. Sinks with Drain Board (Brand-Nirali)

### BATH FITTINGS

- Jaquar/TOTO bath fittings in all bathrooms
- Concealed PVC and uPVC pipes for Sewerage, Drainage and Water Supply lines of reputed brands like Supreme, Astral, Vectus or equivalent

### SANITARY WARE

- All Toilets: Wall mounted EWC of a reputed brand (Jaquar/TOTO) with concealed cistern
- All toilet wash basins: Counter top, wash basin of reputed brand like Jaquar/TOTO with superior finish Granite/Stone counter with moulding on all sides

### FALSE CEILING

- Designer false ceiling in all 3 bedrooms, dining , drawing room & living room
- Grid ceiling in bathroom for ease of maintenance

### DOORS

- Main door: TATA Pravesh Steel MS Door for highest security assurance
- Door Frames: Sagwan wood chaukhat, superior finish mica panelling over high density wooden boards

- Doors: Readymade 35 mm thick Designer doors/Flush doors or equivalent with Sunmica on both sides with branded accessories
- All doors are 8 feet tall for grand look

### RAILINGS

- Balcony/Verandah Railing: 12 mm thick toughened glass with S.S. hand rails
- Staircase Railing: 12 mm thick toughened glass with wooden hand rails and melamine polish

### WINDOWS

- AluK Italian aluminium Window Systems

### VILLAS - ELECTRICAL

- Wiring with RR Kabel/Finolex/ Polycab or equivalent brand with Anchor/Wipro/Havells or equivalent modular switches
- Three phase electrical supply
- ELCB, MCB's of L&T, Schneider, Havells or equivalent approved brand
- AC wiring & copper piping in drawing room and all bedrooms (For dining and living area on first floor, optional at extra cost)
- Option of fully furnished villa is available on request







Neerja Modi School	01 min
Dr. B. Lal Pathology Lab	05 min
Mahindra World City	07 min
Jayshree Periwal School	09 min
JK Lakshmipat University	10 min
St. Xavier's College	10 min
Balaji Soni Hospital	10 min
Delhi Public School	12 min
Manipal University	20 min
Mansarovar Metro Station	27 min
Jaipur International Airport	35 min

**DISTANCE FROM MAJOR LANDMARKS**





## THE URBAN VILLAGE

250 ft SEZ Road Kalwara, Ajmer Road, Jaipur

[www.urban-village.co.in](http://www.urban-village.co.in)

📍 galaxyenclave    📱 @urbanvillage\_jaipur

OFFICE:  
**STONE STUDIO**

SP-5, Riico Industrial Area, Mansarovar, Jaipur,  
Rajasthan 302020